

# S,SB SERIES

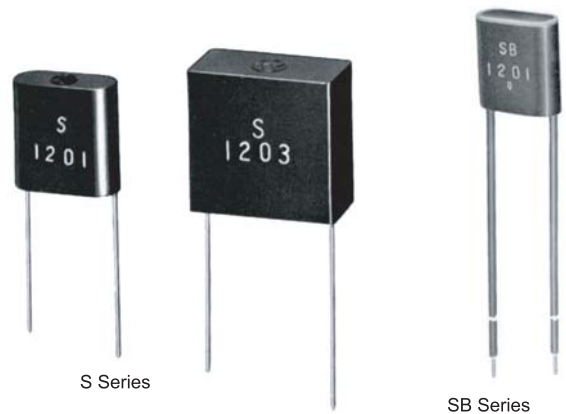
**SPARK QUENCHER**  


## Features

- Designed for 100VAC line.
- Large devices have isolated external mounting tab.
- Two lead style (bare wire or PVC lead).

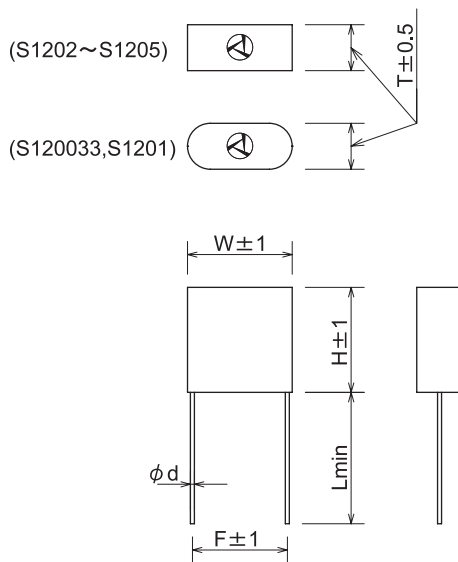
## Applications

- Suppressing noise occurring in Automatic machines, Office appliances and Power source.

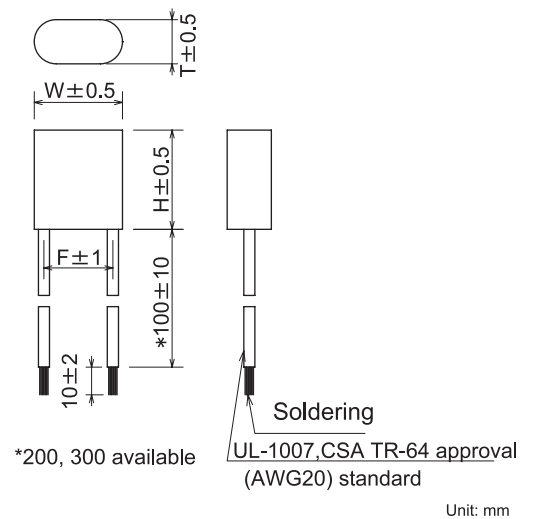


## Dimensions

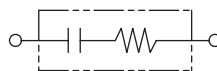
### ● S Series



### ● SB Series



## Circuit



## Electrical Specifications

Rated Voltage **150VAC**

Model Number	Capacitance μF ±20%	Resistance Ω ±30%	Dimensions						Pulse condition (Max.)				Peak Pulse Voltage	Test Voltage	Insulation Resistance
			W	H	T	F	d	L	Peak to peak	Pulse width Max	Repetitive frequency	Pulse width (sec) x Frequency (Hz)			
S120033	0.003	120 (1/4W)	16.0	16.0	7.0	14.5	0.6±0.05	20.0	650V max	20msec.	120Hz max	700V	Line to Line 750VDC or 375Vrms 50/60Hz 60sec	Line to Line 10000MΩ min	
S1201	0.1														
S1202	0.2	120 (1/2W)	18.0	22.0	11.0	15.5	0.8±0.07	15.0		50msec.					1 max
S1203	0.3		23.0	22.5	11.5	20.0									0.5 max
S1205	0.5														
SB1201	0.1	120 (1/4W)	16.0	18.0	8.0	12.5	—	—				700V	Line to Case 1500Vrms 50/60Hz 60sec	Line to Case 10000MΩ min (at 500VDC)	
SB1202	0.2		19.0	23.0	8.5	15.0	—	—							

Operating Temperature: -40~+85°C